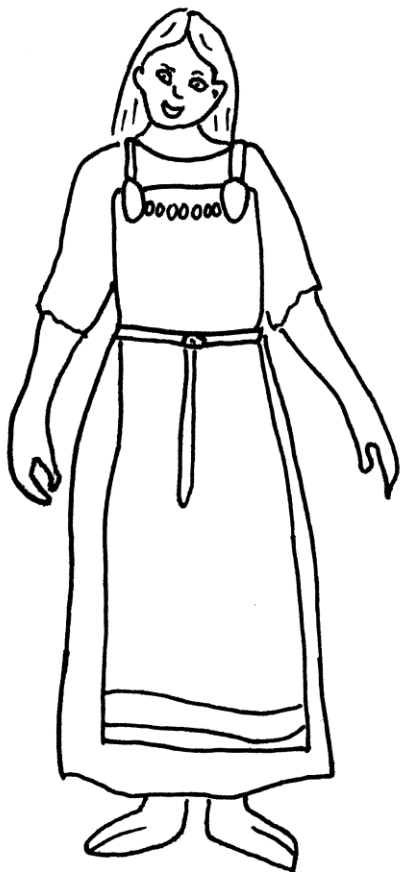


How to dress as a Female Viking

General

Viking clothes wear all sort of colours, so feel free to choose bright colours as well as brown and green. Try to avoid patterns and prints. Choose plain if you can.

Female Costume



The basic female costume is a long dress which goes down to the ankles. A plain nightie might do the job. If you can't find a long dress try a t-shirt (with either long or short sleeves) and long skirt.

You can add to your long dress with an apron. A rectangle of cloth (a tea towel?) pinned at the arm pits would be good. You might want to make some brooches and straps to hold up your apron.

You could colour the brooches below, stick them on to some card and then tape a safety pin to the back.

Tie a belt (cloth or leather) around your waist, over the top of your apron.

If you want to, you could tie some beads between your brooches.

You can wear a cloak if it's cold. Perhaps a towel or blanket would do the job.

If you have long hair you could wear it in plaits. You could cover your hair with a triangular scarf.

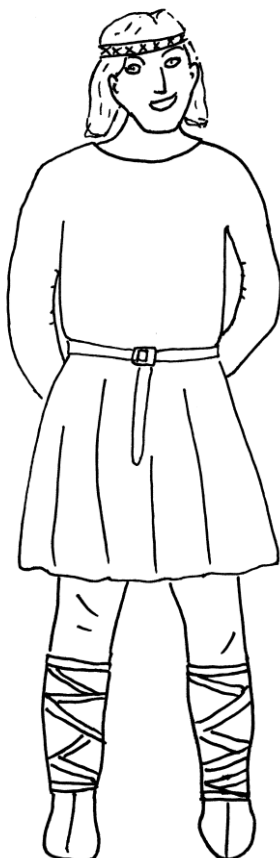


How to dress as a Male Viking

General

Viking clothes wear all sort of colours, so feel free to choose bright colours as well as brown and green. Try to avoid patterns and prints. Choose plain if you can.

Male Costume



The basic male costume is a long tunic which goes down to the knees. An adult's t-shirt might do the job. It could have long or short sleeves.

You need some plain trousers, perhaps pyjama bottoms? Some Vikings bound the bottom o their trousers in a criss cross pattern with cord. You could use ribbon or string to tie them at the bottom.

Tie a belt (cloth or leather) around your waist, over the top of your tunic.

If you want to, you could wear a Thor's hammer round your neck. You could colour the one below and attach it to some cord.

You can wear a cloak if it's cold. Perhaps and towel or blanket would do the job.

You could wear a cloth band around your head. Remember Vikings didn't have horns on their helmets!

